

TopoGetter Compact

New Compact Single Beam 3D Scanner



www.topocolor.de

TopoGetter Compact

The Topology Scan Unit is mounted on a bridge fixed within a rigid stationary frame and moved by a hi-performance linear motor for point-wise measuring of the topology (haptic surface or shape) of the original sample. The scan table (500 x 400 mm) is moved by an encoder synchronized high-precision drive. This machine design ensures extremely high accuracy and scan quality.

Topology Scan Unit

The high resolution measuring unit scans the actual 3D-shape of the haptic surface or object.

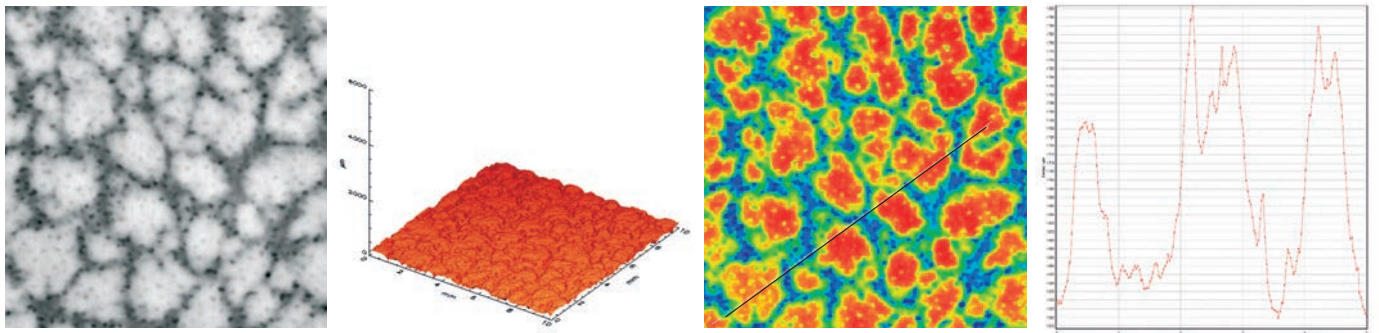
- Scan resolution up to 5,000 dpi
- Up to 2 µm position accuracy of scan head
- Measuring quantization of 32,768 steps in vertical (z)-direction in 16 bit data format
- Choice of optics for measuring ranges of 1, 4 or 10 mm
- Scan speed up to 4kHz sampling rate (LED light source)
- Measuring range in multiple layers up to 50 mm
- Maximum height of scan objects 120 mm
- Designed to fit through standard doors and elevators

Software	Standard	Option	License*
● JOB-Ticketing	✓		
● Batch-scanning	✓		
● PowerFilter basic	✓		
● PowerFilter boost		✓	✓
● Topolyse MT		✓	✓
● T-VISUAL (6to5-Technology)		✓	✓

*including methods patented

3D-Topology Software

Comprehensive job ticket and batch-scanning utilities. Numerous powerful software tools for analyzing, measuring, cleaning, waviness filtering and color display of topology data.



T-VISUAL

Plasticity display of full format scan result

